



www.wincodetek.com

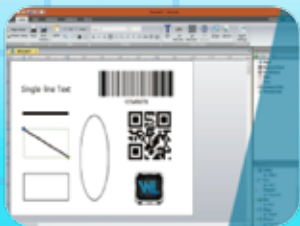
Thermal Transfer Desktop Label Printer LP4 Series

Your winning code

600 dpi
High Print
Quality



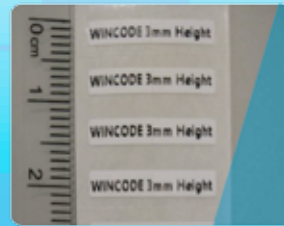
Software supports various of database connection



Free bundled labelling software with friendly interface



Cover closing safety design



3mm label height support



Micro print at 600 dpi resolution

+886-2-2917-1759

www.wincodetek.com

Wincode Technology

Sales@wincodetek.com



Standalone Label Printer



MODEL	LP433E
Printing method	Thermal Transfer / Direct Thermal
Resolution	600 DPI
Max. print speed	76 mm (3") / second
Max. print width	101.6mm (4")
Max. print length	508mm (20")
Enclosure	Double walled plastic
Physical dimension	220mm(W) x 198mm(H) x 288mm(D) 8.7"(W) x 7.8"(H) x 11.3"(D)
Weight	2.5 KG
Label roll capacity	127 mm (5")OD
Ribbon	300M length, max. OD 67 mm, 1" core
Ribbon width	25.4 mm ~ 110 mm (1" ~ 4.3")
Processor	32-bit RISC CPU
Memory	8MB Flash memory, 16MB SDRAM SD slot for expansion up to 32GB
Power	External universal switching power supply Input: AC 100-240V, 2.0A, 50-60Hz; Output: DC 24V, 2.5A, 60W
Operation switch, Button, LED	4 buttons, 2 LEDs 1 LCD(2.13",Resolution:128x64),1 Buzzer
Interface	USB 2.0, RS-232, USB Host, Parallel, Ethernet 10/100 Mbps Bluetooth(option), Wireless 802.11 b/g/n (option)
Sensors	Reflective sensor (adjustable), Ribbon end sensor Cover open sensor, Paper near-end sensor (option)
Internal fonts	Seven kinds of bitmap fonts
Bar code	1D bar code : Code 11, Code 39, Code 93, Code 128, Codabar, EAN/JAN-8, EAN/JAN-13, Interleaved 2-of-5, ITF-14, MSI Plessey, PostCode, Telepen, UPC-A, UPC-E, UCC-128, Standard 2 of 5, Industrial 2 of 5 2D bar code: Code 16K, Code 49, Aztec Code, QR Code, PDF417, Micro PDF417, Data Matrix, Grid Matrix, Micro QR Code, MaxiCode
Printer language	WPL (ZPL, EPL, TSPL, DPL Auto Switch)
Dealer options	Cutter · Peeler dispenser · External label stand
Media width	15 ~ 110 mm (0.59" ~ 4.3")
Media thickness	0.06 ~ 0.19 mm (2.36 ~ 7.48 mil)
Media core diameter	25.4 mm (1")
Label length	3 ~ 508 mm (0.12" ~ 20")
Real time clock	RTC (battery is included)
Storage condition	-40 ~ 60°C, 10~ 90% (non-condensing)
Operation condition	5 ~ 40°C, 25 ~ 85% (non-condensing)
Safety regulation	CE Class B, FCC Class B, CCC, CB, BIS
Bundled software	"WinLabel" label design software with database function, Windows driver, Printer utility
Platform support	Windows XP SP3, Vista, 7, 8, 8.1, 10 and Server 2003, 2008, 2012, 2012R2(32/64 bit) SDK: Android, ActiveX, Windows(C++/C#/VB)



Copyright © Wincode Technology Co, Ltd. All rights reserved. Features and specifications are subject to change without prior notice.

Made in Taiwan



WINCODE TECHNOLOGY CO., LTD
Tel: +886-2-29171759
E-mail: sales@wincodetek.com



www.wincodetek.com