

# PRINTING INNOVATION PRESENTS THE iCUBE1-PRINTER

## iCUBE Printers - Match to the diversified requirements of fast-printing smaller label jobs and variable printing, it helps you to reduce costs

From the experiences with the great variety of small-label-production we like to present you a printer family, which is a match to the diversified requirements of fast-printing smaller label jobs and variable printing, it helps you to reduce costs.

- ▶ Easy to handle
- ▶ Cost-efficient label production
- ▶ Intermittent production
- ▶ Match to the diversified requirements of fast-printing

## iCUBE<sup>1</sup> FEATURES

- ✓ Very fast and effective printing
- ✓ Easy to handle in connection with a PC
- ✓ User friendly 3-button-solution at the printer which guarantee an easier handling for the user
- ✓ The Toolbox allows the implementation of different actions



## TECHNICAL SPECIFICATIONS

### Printer Technology

Drop on Demand Thermal Inkjet printing

Printable width is 215.9mm (8.5 inch)

Oversize max. 220mm

70,400 nozzles (14,080 per color)

Five channels: Cyan, Magenta, Yellow, Black (2x)

### Print Speed

300mm/s at 1,600 x 1,600 dpi black

300mm/s at 1,600 x 800 dpi color

150mm/s at 1,600 x 1,600 dpi black and color

12 inches/s (21,6 km/day)

### Print Quality

Black and color: 1,600 dpi native resolution

### Operating Systems

Microsoft Windows XP and Windows 7 and Windows 8

### Media Handling

Gap sensing

Black mark sensing

Continuous roll handling

### Media Dimensions

Max media width: 225mm

Minimum media width: 50mm (2 inch)

Minimum media length: 50mm (2 inch)

Media thickness: 0.13 to 0.33mm (0.007-0.13 inch)

### Power Interface

10 AMPS - 24VDC

### Ink Cartridges

Dye based inks, colors: CMYKK, Non-reillable ink cartridges, Cartridge size: 250ml

### Cutter

Integrated cutter

### Operation data

Power supply 90-240 V ~50/60 Hz, PFC

Power consumption max. 1200 W (5A bizt.)

Operating temperature 15-35 C°

### Dimensions

Width 62 cm

Height 35 cm

Depth 50 cm

Weight 40 kg

### Contact

Printing Innovation brand of JG special products GmbH Neue Straße 29, 76477 Elchesheim-Illingen, Germany

Phone: +49 7245 91817 80 Email: solutions@printing-innovation.com

Web [www.printing-innovation.com](http://www.printing-innovation.com)

## Leading manufacturer of digital solutions in printing

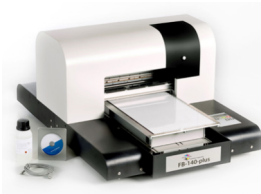
As a leading manufacturer of digital solutions for industrial printer systems we are specialized in delivering individual and customized solutions for a wide range of demands and challenges.

The continuous on-going development of our existing systems as well as developing new innovative systems are our motivation. The process of constantly reinventing ensures our customers great benefit.

To provide our customers the best possible service: All materials and consumables are in stock and available whether inks, printheads or other consumables. A steady shipping time guarantees our clients little downtime and thus a high efficiency. We are manufacturing in Germany.



## PRODUCT PORTFOLIO - WE ARE MANUFACTURER OF DIGITAL SOLUTIONS



**TI Printer 140 plus**

Thermo-Ink-Printer for mechanical and chemical industrie requirements.



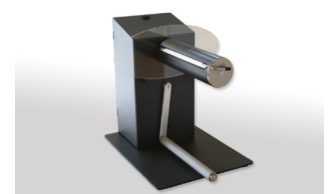
**Speedstar 3000**

Prints color labels in large numbers and high quality - inexpensively and quickly.



**iCUBE3**

Complete stand-alone printer solution with an onboard touch-display.



**Unwinder EAB-320**

External unwinder for big printing projects, suitable to our products.



## INDUSTRY EXAMPLES

- ✓ automotive
- ✓ trade & logistic
- ✓ chemical industry
- ✓ mechanical engineering
- ✓ plant engineering
- ✓ electrical engineering
- ✓ pharmaceutical
- ✓ shipping
- ✓ craft and engraving
- ✓ companies

## APPLICATION EXAMPLES

- ✓ machines, devices, plants
- ✓ company marking
- ✓ doorplates & advertising
- ✓ industry solution



## OUR SERVICE

- ▶ individual consultation and implementation tailored to it your needs and requirements
- ▶ service & support for any questions
- ▶ full availability of all consumables and spare parts