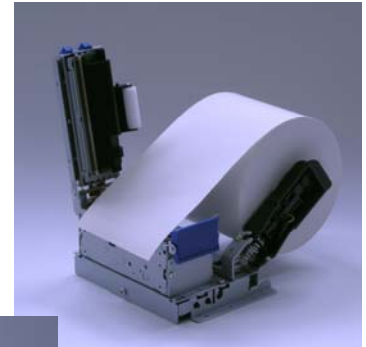


SK1-31

3-inch Kiosk Printer

Features

- Small profile and light weight
- 200mm/sec High speed printing
- Easy paper operation with head open function
- Wide variety of paper width 58–83mm and thickness 0.06–0.15mm
- Variable paper holder position
- Replaceable roll paper from any directions
- Durable, high reliability and easy to maintenance
- Rugged enough for both indoor and outdoor environments



Applications

- KIOSK systems
- ATM systems
- Gaming and Lottery
- Parking and Gas pos systems
- Various kinds of ticketing applications



Options

- Presenter
- Paper bezel
- Large paper roll holder
- Label gap sensor

Specifications

Printing method	Direct line thermal
Resolution	8 dots/mm (203dpi)
Number of dots	Max. 640 dots/line
Printing width	Max. 80 mm
Printing speed	Max. 200 mm/sec
Paper width	83/80/60/58mm
Paper thickness	0.06–0.15mm
Paper roll diameter	Max. Φ 102mm (Φ 200mm at large paper holder)
Paper replaceable directions	Upper/Right/Left
Paper supporting method	Both-ends center hole support
Character font	8x16, 12x24
Bar code	JAN13/8, CODE39, ITF, CODABAR, CODE128, UPC-A/E (option) QR, Maxicode, PDF417
Sensor	Paper end, Paper near end, Head close, Black mark, Print head temperature, Cutter jam, Label gap sensor(option)
Cutter	Full and partial cut (Command selectable)
Inter face	RS232C Serial+USB, Parallel
Command	ESC/POS Conformity
Power input	24VDC
Operating temperature	-20 to 60 degrees C
Reliability	150km, 200million pulses/Print head 1,500,000 cuts/Cutter
Standard	CE, FCC, VCCI
Overall dimensions	127(W) × 145.5(D) × 88.5(H)mm
Mass	Approx630g

Dimensions (mm)

